



Centrum Certyfikacji BARG Sp. z o.o.  
street Delfina 4B, 03-194 Warszawa, POLAND  
Proficiency Testing Department  
e-mail: [badania.bieglosci@barg.pl](mailto:badania.bieglosci@barg.pl)  
VAT ID 524-29-36-340

## PROFICIENCY TESTING PROGRAM

No CCB/PT-4.4/B.1

issue 7 of 20.01.2025

### Fresh concrete and hardened concrete

PROFICIENCY TESTING ORGANIZER ACCREDITED BY PCA

No PT 014

**Developed:**

**Agata Dziubek**  
*Statistician*

**Brygida Augustyniok**  
*Technical Manager*

**Approved:**

**Brygida Augustyniok**  
*Coordinator*

20.01.2025

*date and signature*

## Contents:

1. Proficiency Testing Organizer.....	3
2. Individuals involved in the design and operation of the proficiency testing program .....	3
3. Purpose of the program .....	3
4. Subcontracting .....	4
5. Criteria for Participation in Proficiency Testing .....	4
6. Scope of Organized Proficiency Testing .....	6
7. Potential sources of errors .....	7
8. Preventive Measures to Prevent Collusion Among Participants .....	7
9. Production, storage and distribution of research objects and instructions for Participants.....	7
10. Checking the homogeneity and stability of proficiency testing objects .....	7
10.1. Homogeneity.....	7
10.2. Stability .....	11
10.3. Procedure in case of inhomogeneity and instability .....	11
10.3.1. Inhomogeneity.....	11
11. Method and Evaluation Criteria.....	11
11.1. Determination of the assigned value.....	14
11.1.1. Method II Consensus value from participant results.....	14
11.2. Determination of the $\sigma_{pt}$ Value .....	15
11.2.1. Method I By perception of experts.....	15
11.2.2. Method III Using the repeatability and reproducibility standard deviations from a previous collaborative study of precision of a measurement method .....	15
11.2.3. Method IV From data obtained in the same round of a proficiency testing scheme.....	15
11.2.1. Determined for evaluation of sampling proficiency test .....	16
11.3. Criteria used for proficiency assessment.....	16
12. Report.....	17
13. Complaints and Appeals.....	18
14. Contact with the Participant .....	18
15. Reference Documents.....	19

## 1. Proficiency Testing Organizer

Centrum Certyfikacji BARG Sp. z o.o.  
Proficiency Testing Department  
street Delfina 4B, 03-194 Warszawa, POLAND  
e-mail: [badania.bieglosci@barg.pl](mailto:badania.bieglosci@barg.pl)  
Tax Identification Number: 524-29-36-340

In the scope of these proficiency tests, the PT Organizer undertakes to maintain confidentiality of all information provided by Participants, including, among others, test results and the identities of individual Participants, and to ensure impartiality in evaluating their actions. The Organizer also commits to securing documentation related to the tests against unauthorized access.

This proficiency testing program is conducted in accordance with the requirements of the PN-EN ISO/IEC 17043:2011 (EN ISO/IEC 17043:2010)<sup>w</sup> standard. The PT Organizer is accredited by the Polish Accreditation Center for the objects and properties covered by this PT program – Accreditation Scope No. PT 014, available on the PT Organizer's website [www.ccbarg.pl](http://www.ccbarg.pl) and on the PCA website [www.pca.gov.pl](http://www.pca.gov.pl).

## 2. Individuals involved in the design and operation of the proficiency testing program

Coordinator / Technical Manager Brygida Augustyniok  
Centrum Certyfikacji BARG Sp. z o.o.  
E-mail: [brygida.augustyniok@barg.pl](mailto:brygida.augustyniok@barg.pl)  
Tel: +48 661 630 153

Statistician Agata Dziubek  
Centrum Certyfikacji BARG Sp. z o.o.  
E-mail: [agata.dziubek@barg.pl](mailto:agata.dziubek@barg.pl)  
Tel: +48 691 227 465

## 3. Purpose of the program

The aim of the proficiency testing program is:

- evaluation of the Participant's performance in conducting specific tests / sampling
- providing evidence to confirm the validity of results and technical competence of the Participant
- enabling the Participant to identify areas for improvement through proficiency testing
- providing customers with additional information to enhance trust

<sup>w</sup> standard having withdrawn status

#### 4. Subcontracting

During the implementation of this proficiency testing program, the PT Organizer will use subcontracting for:

- sampling and performing tests to assess homogeneity;
- performing tests to evaluate the results of the Participant's sampling performance.

In addition, the PT Organizer allows the use of subcontracting for:

- storage of the samples taken by the Participants for the period necessary for their binding, in accordance with the requirements of PN-EN 12390-2:2019-07 (EN 12390-2:2019), PKN-CEN/TS 12390-9:2007 (CEN/TS 12390-9:2006), PKN-CEN/TS 12390-9:2017-07 (CEN/TS 12390-9:2016), PN-88/B-06250, PN-B-06265:2022-08, in case it is not possible for the PT Organizer to store the samples during the execution of the round.

The above activities will be carried out by the accredited laboratory BARG CENTRUM Sp. z o.o. based in Ożarów Mazowiecki, Accreditation Scope No. AB 1354.

If it becomes necessary to subcontract in another area during the program, the PT Organizer will promptly inform Participants in writing about the additional services it intends to subcontract.

The proficiency testing organizer does not subcontract the planning of the proficiency testing program, assessment of performance results, or the development and authorization of the final report.

#### 5. Criteria for Participation in Proficiency Testing

Participation in proficiency testing is possible after acceptance of the participation conditions specified in this program, which occurs upon submission of the dedicated Registration Form for a particular round, within the deadline indicated in the Schedule of the PT program, to the email address [badania.bieglosci@barg.pl](mailto:badania.bieglosci@barg.pl).

The proficiency testing format is open and is carried out cyclically. Participation is open to both accredited and non-accredited laboratories, as well as other interested parties involved in conformity assessment activities. The minimum number of Participants for each method is 5, while the maximum is 20. In case of too few submissions, the PT Organizer may extend the submission period (which may affect the deadlines indicated in the Schedule of the program for a given round) or cancel the proficiency testing for a specific property, and Participants will be promptly informed. In case of exceeding the number of Participants, the order of submissions will determine participation. In the event of an overwhelming number of interested parties, the PT Organizer may announce additional rounds under this program. A Participant may take part in proficiency testing for selected properties. Tests should be conducted by the Participant using the testing methods specified by the PT Organizer.

In the proficiency test, for a given method, no more than:

- 2 Participants from one entity, where the total number of Participants is 10 and below,
- 3 Participants from one entity, where the total number of Participants is more than 10.

A Participant without accreditation for a specific test is also required to conduct the test using supervised equipment, ensuring measurement consistency, in accordance with DA-06 (ILAC-P10).

Details of the proficiency testing program implementation are described in the Instruction developed for each program round. Participants should follow the requirements of the Instruction.

Results from Participants should be provided with expanded measurement uncertainty, with the same accuracy and in the same unit as the test result, at a specified expansion factor  $k$  and expansion probability  $p$ , following ILAC-G17. The uncertainty of the result should take into account the uncertainty due to sampling.

Results from Participants that do not meet program requirements and/or instructions for Participants, including results obtained using a different testing method, failure to meet requirements for measurement consistency, or reported without measurement uncertainty, will not be used to determine the values of  $x_{pt}$  and  $\sigma_{pt}$ .

Participation in proficiency testing is subject to a fee. Participation costs are presented in the Registration Form. After registering for participation, the PT Organizer sends an invoice with a 14-day payment term to the Participant. The proficiency testing report can be provided to the Participant after settling the payment for participation. Failure to provide proficiency testing results by the Participant does not exempt them from the obligation to pay according to the scope of the reported participation.

A Participant has the right to withdraw from participation in proficiency testing free of charge, which requires submitting a written withdrawal to the email address [badania.bieglosci@barg.pl](mailto:badania.bieglosci@barg.pl) within 10 days before the day of scheduled sampling.

## 6. Scope of Organized Proficiency Testing

Ord.	Measured quantity/property	Reference document
<b>Sampling/testing of fresh concrete</b>		
1.	Sampling [Evaluated by testing the compressive strength performed by the PT Organizer according to PN-EN 12390-3:2019-07 (EN 12390-3:2019) on samples taken and made by the Participant]	PN-EN 12350-1:2019-07 (EN 12350-1:2019)
2.	Slump test	PN-EN 12350-2:2019-07 (EN 12350-2:2019)
3.	Flow table test	PN-EN 12350-5:2019-08 (EN 12350-5:2019)
4.	Density	PN-EN 12350-6:2019-08 (EN 12350-6:2019)
5.	Air content – Pressure gauge method	PN-EN 12350-7:2019-08 (EN 12350-7:2019) PN-EN 12350-7:2019-08/Ap1:2023-05
<b>Testing hardened concrete</b>		
6.	Compressive strength	PN-EN 12390-3:2019-07 (EN 12390-3:2019)
7.	Density	volume by calculation using actual measurements PN-EN 12390-7:2019-08 (EN 12390-7:2019) PN-EN 12390-7:2019-08/AC:2021-01 (EN 12390-7:2019/AC:2020)
8.	Flexural strength	centre-point loading PN-EN 12390-5:2019-08
9.		two-point loading (EN 12390-5:2019)
10.	Tensile splitting strength	PN-EN 12390-6:2024-04 (EN 12390-6:2023)
11.	Depth of penetration of water under pressure	PN-EN 12390-8:2019-08 (EN 12390-8:2019)
12.	Frost resistance by the usual method	PN-B-06265:2022-08 Annex N
13.		PN-88/B-06250 <sup>W</sup>
14.	Water permeability of concrete	PN-88/B-06250 <sup>W</sup>
15.	Absorbability	PN-88/B-06250 <sup>W</sup>
16.	Freeze-thaw resistance with de-icing salts – Scaling (slab test method)	PKN-CEN/TS 12390-9:2007 <sup>W</sup> (CEN/TS 12390-9:2006 <sup>W</sup> )
17.		PKN-CEN/TS 12390-9:2017-07 (CEN/TS 12390-9:2016)
18.		PN-B-06265:2022-08 Annex O

<sup>W</sup> standard with withdrawn status

The scope of measured quantities/properties is specified in the Registration Form and defined within successive rounds of the program in accordance with the Schedule of the PT program for a given calendar year.

Detailed information on what needs to be identified, measured, or tested is provided in the Instruction and Test Result Cards. Instructions and Test Results Cards are made available to Participants prior to arrival at the sampling site. The range of expected values and/or properties for proficiency testing objects is indicated in the Registration Form and/or Instruction for a specific round.

## **7. Potential sources of errors**

- Incorrect handling of test objects
- Occurrence of collusion among Participants
- Equipment that does not meet the requirements of the reference document
- Malfunctioning equipment during sampling / test
- Influence of environmental conditions during sampling / test
- Small number of Participants
- Use of a different method by the Participant than required in the proficiency testing program
- Non-compliance with the PT Organizer's guidelines
- Non-compliance with the guidelines included in the testing methods

## **8. Preventive Measures to Prevent Collusion Among Participants**

Each Participant, by signing the registration form, commits to maintaining confidentiality of obtained test results in relation to other Participants and securing proficiency testing documentation from unauthorized access.

Participants are obligated to sampling / conduct tests and submit the results to the Proficiency Testing Department (DBB) of the PT Organizer, without consulting with other Participants, whose participation in each program is known to them from other sources. In the event of collusion detection, Participants will be disqualified from participating in the specific round and will bear the total costs of participation in the proficiency testing program. It should be noted, however, that avoiding collusion and falsifying results is the responsibility of each Participant.

## **9. Production, storage and distribution of research objects and instructions for Participants**

The PT Organizer, after gathering the required number of Participants, organizes the sampling / testing site and provides all Participants with information related to the rules of sampling / testing and how to store samples until transport by the Participant.

The proficiency test objects shall be produced in a manner that ensures their high homogeneity by sampling from a single batch / concrete truck. The fresh concrete is manufactured and delivered to the sampling site, by a manufacturer with a current National Certificate of Conformity of Factory Production Control for ready-mix concrete.

Storage (care of samples) is carried out under conditions that meet the requirements of the test methods, in such a way as to maintain adequate stability.

## **10. Checking the homogeneity and stability of proficiency testing objects**

### **10.1. Homogeneity**

Homogeneity is assessed according to the algorithm presented in Figure 1. Test samples will be randomly selected from the prepared proficiency testing objects for a given round of the program, in quantities specified in Table 1. Sampling/series (g) will be spread evenly over 30 min. Two portions (m) will be prepared from each series. The tests will be conducted under repeatability conditions as soon as possible after the samples are collected.

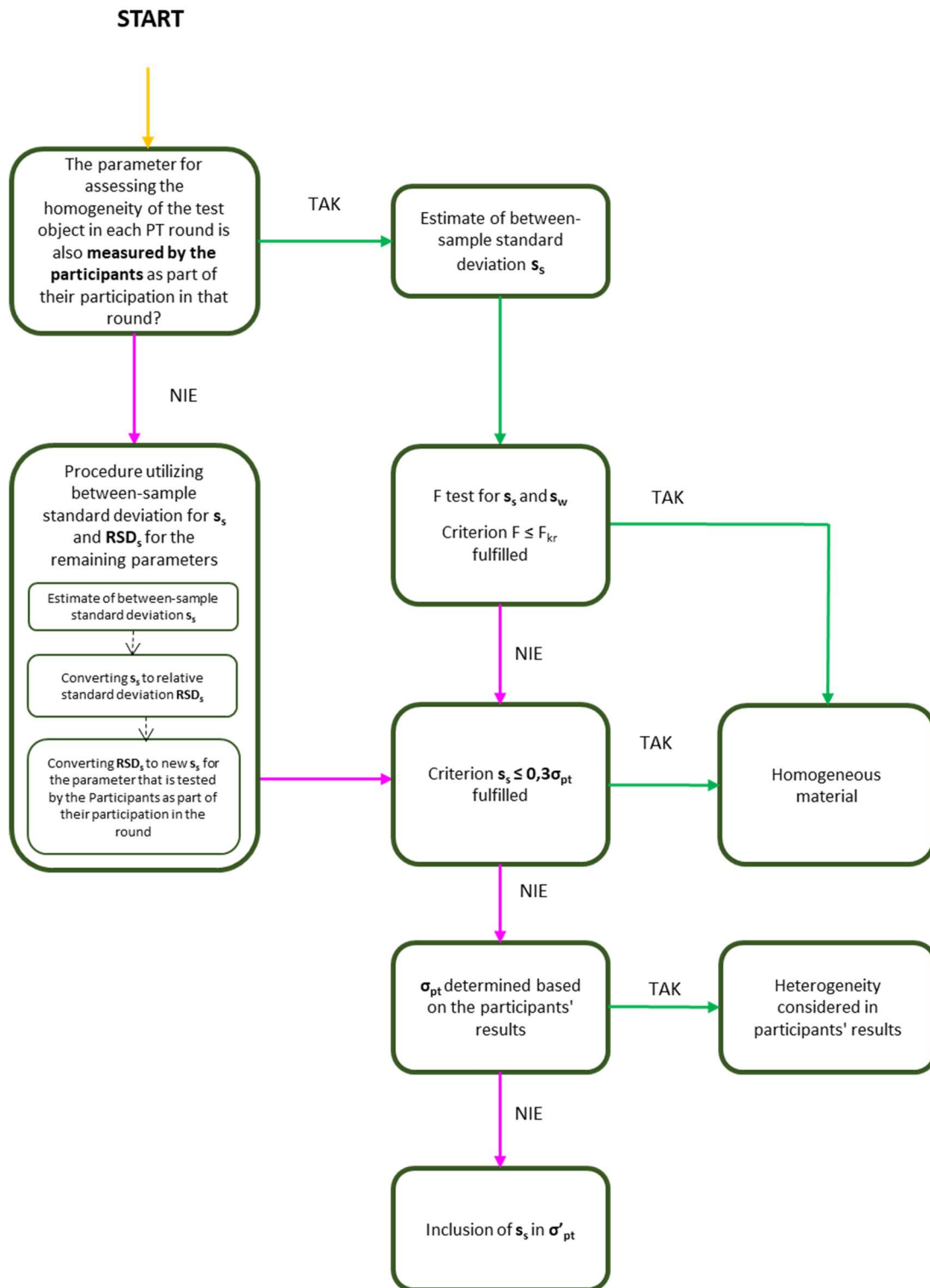


Fig. 1. Homogeneity assessment algorithm in proficiency testing



Table 1. List of quantity verifying homogeneity for individual values measured as part of proficiency tests

Measured quantity/property	Number of samples	A quantity verifying homogeneity
<b>Sampling/testing of fresh concrete</b>		
Sampling PN-EN 12350-1:2019-07 (EN 12350-1:2019)	6	Slump test PN-EN 12350-2:2019-07 (EN 12350-2:2019)
Slump test PN-EN 12350-2:2019-07 (EN 12350-2:2019)	6	Slump test PN-EN 12350-2:2019-07 (EN 12350-2:2019)
Flow table test PN-EN 12350-5:2019-08 (EN 12350-5:2019)	6	Slump test PN-EN 12350-2:2019-07 (EN 12350-2:2019)
Density PN-EN 12350-6:2019-08 (EN 12350-6:2019)	6	Slump test PN-EN 12350-2:2019-07 (EN 12350-2:2019)
Air content – Pressure gauge method PN-EN 12350-7:2019-08 (EN 12350-7:2019) PN-EN 12350-7:2019-08/Ap1:2023-05	6	Slump test PN-EN 12350-2:2019-07 (EN 12350-2:2019)
<b>Testing hardened concrete</b>		
Compressive strength PN-EN 12390-3:2019-07 (EN 12390-3:2019)	6	Compressive strength PN-EN 12390-3:2019-07 (EN 12390-3:2019)
Tensile splitting strength PN-EN 12390-6:2024-04 (EN 12390-6:2023)	6	Compressive strength PN-EN 12390-3:2019-07 (EN 12390-3:2019)
Flexural strength PN-EN 12390-5:2019-08 (EN 12390-5:2019)	6	Compressive strength PN-EN 12390-3:2019-07 (EN 12390-3:2019)
Density PN-EN 12390-7:2019-08 (EN 12390-7:2019), PN-EN 12390-7:2019-08/AC:2021-01 (EN 12390-7:2019/AC:2020)	6	Density <sup>1</sup> PN-EN 12390-7:2019-08 (EN 12390-7:2019), PN-EN 12390-7:2019-08/AC:2021-01 (EN 12390-7:2019/AC:2020)
Depth of penetration of water under pressure PN-EN 12390-8:2019-08 (EN 12390-8:2019)	6	Density <sup>1</sup> PN-EN 12390-7:2019-08 (EN 12390-7:2019), PN-EN 12390-7:2019-08/AC:2021-01 (EN 12390-7:2019/AC:2020)
Frost resistance by the usual method PN-B-06265:2022-08 Annex N PN-88/B-06250 <sup>w</sup>	6	Density <sup>1</sup> PN-EN 12390-7:2019-08 (EN 12390-7:2019), PN-EN 12390-7:2019-08/AC:2021-01 (EN 12390-7:2019/AC:2020)
Water permeability of concrete PN-88/B-06250 <sup>w</sup>	6	Density <sup>1</sup> PN-EN 12390-7:2019-08 (EN 12390-7:2019), PN-EN 12390-7:2019-08/AC:2021-01 (EN 12390-7:2019/AC:2020)
Absorbability PN-88/B-06250 <sup>w</sup>	6	Density <sup>1</sup> PN-EN 12390-7:2019-08 (EN 12390-7:2019), PN-EN 12390-7:2019-08/AC:2021-01 (EN 12390-7:2019/AC:2020)
Freeze-thaw resistance - Scaling PKN-CEN/TS 12390-9:2007 <sup>w</sup> (CEN/TS 12390-9:2006 <sup>w</sup> ) PKN-CEN/TS 12390-9:2017-07 (CEN/TS 12390-9:2016) PN-B-06265:2022-08 Annex O	6	Density <sup>1</sup> PN-EN 12390-7:2019-08 (EN 12390-7:2019), PN-EN 12390-7:2019-08/AC:2021-01 (EN 12390-7:2019/AC:2020)

<sup>1</sup> Density in a saturated state, with volume by calculation using actual measurements<sup>w</sup> standard with withdrawn status

Estimate of between-sample standard deviation (according to ISO 13528:2022-08 Annex B.3), homogeneity is verified by calculating the standard deviation between samples:

<p>If <math>m=2</math></p> $s_s = \sqrt{\max(0, s_x^2 - s_w^2 / 2)}$ $s_{\bar{x}} = \sqrt{\sum_{t=1}^g (\bar{x}_t - \bar{\bar{x}})^2 / (g - 1)}$ $s_w = \sqrt{\sum_{t=1}^g w_t^2 / (2g)}$	<p>If <math>m \neq 2</math></p> $s_s^2 = s_{s,w}^2 - s_w^2 = \frac{1}{(g-1)} \sum_{t=1}^g (\bar{x}_t - \bar{\bar{x}})^2 - \frac{1}{m} s_w^2$ $s_x^2 = \frac{1}{(g-1)} \sum_{t=1}^g (\bar{x}_t - \bar{\bar{x}})^2$ $s_w^2 = \frac{1}{g} \sum_{t=1}^g s_t^2$ $s_{s,w}^2 = \frac{1}{(g-1)} \sum_{t=1}^g (\bar{x}_t - \bar{\bar{x}})^2 + \left(1 - \frac{1}{m}\right) s_w^2 = s_s^2 + s_w^2$
---	--

where:

$s_s$  – estimate of between-sample standard deviation

$s_{\bar{x}}$  – standard deviation of sample averages

$s_w$  – within-sample standard deviation

$s_{s,w}$  – combined variance value of  $s_s$  and  $s_w$

$\bar{x}_t$  – mean for the t-th sample ( $t=1, \dots, g$ )

$\bar{\bar{x}}$  – overall mean

$w_t$  – between-test-portion range

$g$  – number of proficiency test items tested in a homogeneity check

$m$  – number of replicate measurements to be made by each participant on a proficiency test item

Test samples will be deemed homogeneous if the condition is satisfied according to the algorithm presented in Figure 1:

$$F \leq F_{kr}$$

or

$$s_s \leq 0,3 \sigma_{pt}$$

where:

$$F = \frac{s_{\bar{x}}^2}{s_w^2}$$

$F_{kr \text{ unilateral}} (P = 95\%; g-1; g \cdot (m-1))$

## 10.2. Stability

Evaluation of the stability of the fresh concrete and hardened concrete due to the variability of the material and its properties over time is not possible. In order to minimize the impact of material variability on the results obtained by the Participants, the PT Organizer for each round of the test, in the Instructions to Participants, will provide detailed guidelines for the various stages of the test execution, including the exact dates / deadlines for the test. For the fresh concrete itself, the stability is indirectly evaluated in the homogeneity test.

### 10.3. Procedure in case of inhomogeneity and instability (according to ISO 13528:2022-08 Annex B.2.5)

#### 10.3.1. Inhomogeneity

If the criterion of sufficient homogeneity is not met, and  $\sigma_{pt}$  is not determined from the participants' results, one of the following options is considered:

##### a. Option I

Include the inter-sample variation  $s_s$  or standard deviation of the studied series of results in the data analysis by using:

-  $\sigma'_{pt}$  determined by the formula

$$\sigma'_{pt} = \sqrt{\sigma_{pt}^2 + s_s^2}$$

- or  $z'$  specified by the formula

$$z'_i = \frac{x_i - x_{pt}}{\sqrt{\sigma_{pt}^2 + s_s^2}}$$

##### b. Option II

Not to evaluate the results of the Participants.

## 11. Method and Evaluation Criteria

After receiving proficiency testing results from all participants, a preliminary data analysis will be conducted to verify whether the provided results meet the requirements set by the PT Organizer as specified in the program and instructions for participants. This data analysis may involve verification of measurement consistency, application of the appropriate research method, or presentation of the test result (correct unit, required precision, result with expanded measurement uncertainty), etc. Participants' results obtained in a given round of the program will be verified for distribution before statistical analysis of the data.

Results from participants that do not meet the program and/or instruction requirements, including results obtained using a different research method, failure to meet consistency requirements, or presented without measurement uncertainty, will not be used to determine the values  $x_{pt}$  and  $\sigma_{pt}$ .

In cases where analyses other than robust ones are applied to determine the values  $x_{pt}$  or  $\sigma_{pt}$ , a Grubbs' test will be conducted (according to PN-ISO 5725-2:2002 (ISO 5725-2:1994)) to detect outlier values.

The Grubbs' test will be used to check whether the dataset contains data affected by gross errors. For this purpose, the obtained values are ranked in ascending order, and then the parameters  $G_1$  and  $G_p$  are determined according to the formulas:

$$G_1 = \frac{\bar{x} - x_1}{s}$$

$$G_p = \frac{x_p - \bar{x}}{s}$$

$$\bar{x} = \frac{1}{p} \sum_{i=1}^P x_i$$

$$s = \sqrt{\frac{1}{p-1} \sum_{i=1}^P (x_i - \bar{x})^2}$$

where:

$\bar{x}$  – mean value

$x_1$  – smallest value in the result set

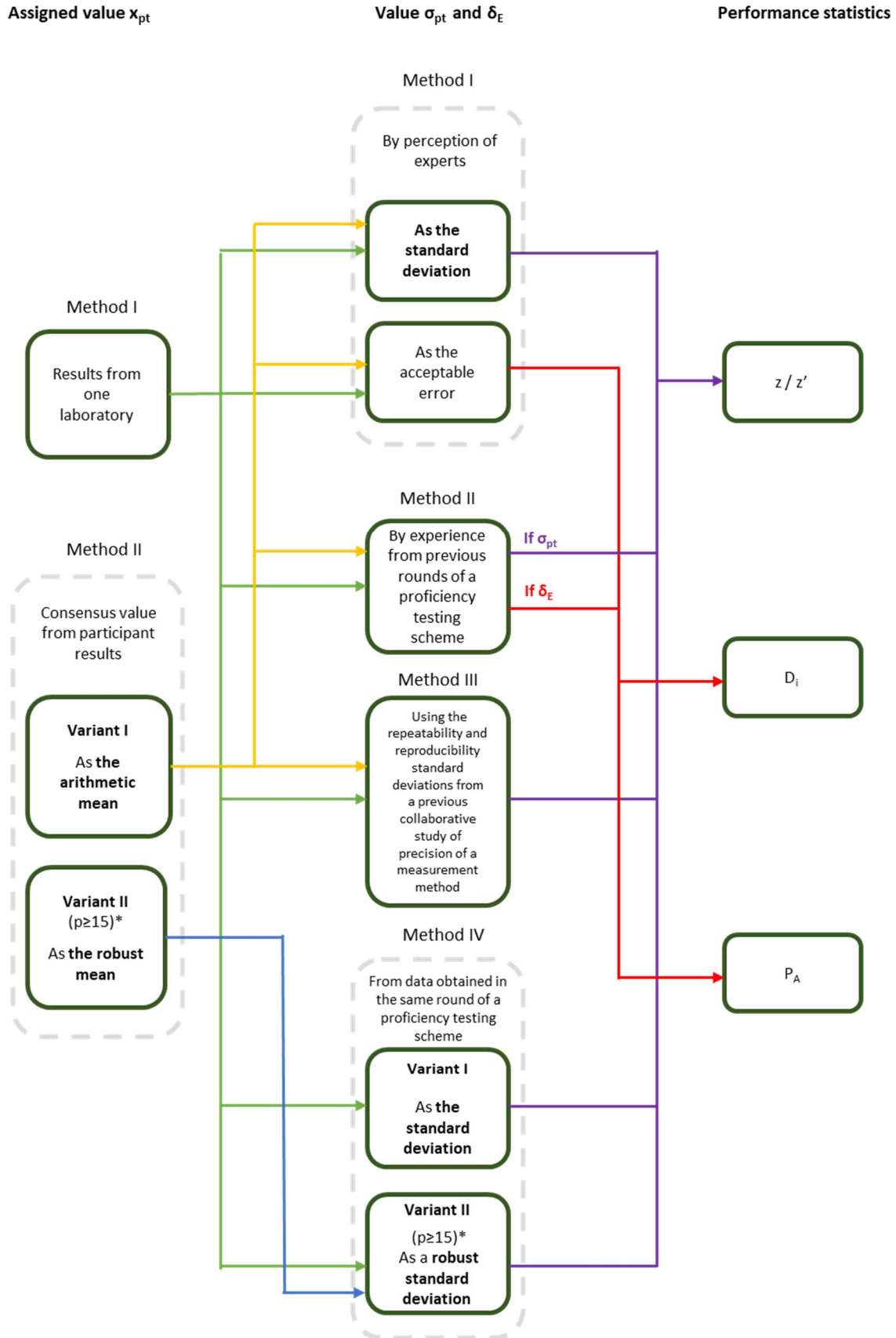
$x_p$  – largest value in the result set

$s$  – standard deviation

The obtained values will be compared with the critical value at a confidence level of 95%. If  $G_1$  or  $G_p$  exceeds the critical value, the corresponding result will be considered as an outlier and will be excluded from the dataset used for further calculations.

The general statistical model used in proficiency testing at Centrum Certyfikacji BARG Sp. z o.o. is presented in Figure No. 2 - Algorithm of the PT Statistical Model. Methods for determining the assigned value,  $\sigma_{pt}$  value,  $\delta_E$  value, and the indicators used for the purposes of this proficiency testing program are described in the following subpoints.

After receiving the result cards, the PT Organizer, due to the justification for applying a different approach, reserves the right to choose a different statistical path than presented in the following subpoints.



\* in justified cases, it is allowed to use:  $p \geq 12$

Fig. 2. Statistical model algorithm in proficiency testing

### 11.1. Determination of the assigned value

The assigned value  $x_{pt}$  will be determined according to Method II of the statistical model algorithm (Fig. 2) based on the results obtained in the current round using the arithmetic mean or Algorithm A described in Annex C of ISO 13528:2022-08, Variant I or II below.

#### 11.1.1. Method II Consensus value from participant results (according to ISO 13528:2022-08, point 7.7)

##### Variant I

The assigned value  $x_{pt}$  as the arithmetic mean:

$$x_{pt} = \bar{x}$$

where:

$\bar{x}$  – arithmetic mean of results provided by participants in each round after excluding outliers

The uncertainty  $u(x_{pt})$  is estimated using the formula:

$$u(x_{pt}) = \frac{s}{\sqrt{p}}$$

where:

$s$  – standard deviation after excluding outliers

$p$  – number of results after excluding outliers

##### Variant II

The assigned value  $x_{pt}$  as the robust mean when the number of Participants is 15 or more ( $p \geq 15$ ):

$$x_{pt} = x^*$$

where:

$x^*$  - the robust mean calculated using algorithm A

The uncertainty  $u(x_{pt})$  is estimated using the formula:

$$u(x_{pt}) = \frac{1,25}{\sqrt{p}} \cdot s^*$$

where:

$s^*$  - the robust standard deviation determined using algorithm A

$p$  – the number of provided results

#### Limitation of the uncertainty of the assigned value

If the condition is met:

$$u(x_{pt}) \leq 0,3\sigma_{pt}$$

where:

$\sigma_{pt}$  – standard deviation for assessing proficiency testing

in that case, the uncertainty of the assigned value is considered insignificant and will not be taken into account in the interpretation of proficiency testing round results.

Otherwise, the uncertainty of the assigned value will be included in the calculations.

## 11.2. Determination of the $\sigma_{pt}$ Value

The  $\sigma_{pt}$  value will be determined according to Method I, III, or IV of the statistical model algorithm (Fig. 2) as the standard deviation, respectively, required based on the precision of the measurement method or data obtained in the specific round.

### 11.2.1. Method I By perception of experts (according to ISO 13528:2022-08 point 8.2)

The standard deviation for assessing proficiency testing will be established by the expert panel based on experience derived from the application of the method.

### 11.2.2. Method III Using the repeatability and reproducibility standard deviations from a previous collaborative study of precision of a measurement method (according to ISO 13528:2022-08 point 8.5)

For measured quantities for which information on the repeatability ( $\sigma_r$ ) and reproducibility ( $\sigma_R$ ) of the method is available, the standard deviation for assessing proficiency testing ( $\sigma_{pt}$ ) will be calculated based on this information as follows:

$$\sigma_{pt} = \sqrt{\sigma_R^2 - \sigma_r^2 \left(1 - \frac{1}{m}\right)}$$

where:

$\sigma_R$  – reproducibility standard deviation

$\sigma_r$  – repeatability standard deviation

$m$  – number of repeated measurements made by each laboratory in a given PT round; if  $m = 1$ , then  $\sigma_{pt} = \sigma_R$

### 11.2.3. Method IV From data obtained in the same round of a proficiency testing scheme (according to ISO 13528:2022 point 8.6)

#### Variant II (according to ISO 13528:2022 Annex C.3.1)

Standard deviation for assessing proficiency testing as a **robust deviation** when the number of Participants is 15 or more ( $p \geq 15$ ):

$$\sigma_{pt} = s^*$$

where:

$s^*$  – Robust estimate of the participant standard deviation using algorithm A (without rejecting outliers)

**11.2.1. Determined for evaluation of sampling proficiency test**

The standard deviation for evaluation of sampling proficiency testing is determined according to the formula:

$$\sigma_{pt,pob} = \sqrt{\sigma_{pt}^2 - \frac{\sigma_{powt}^2}{n}}$$

$\sigma_{pt}$  – standard deviation for evaluation of proficiency testing

$\sigma_{powt}$  – standard deviation of repeatability

$n$  – number of repetitions of the measurement for the sample taken by the Participant

**11.3. Criteria used for proficiency assessment**

The z score or z' score will be used to assess the results of participants' performance.

**The z score** (according to ISO 13528:2022-08 point 9.4)

The z score is applicable when the condition is met  $u(x_{pt}) \leq 0,3\sigma_{pt}$

$$z_i = \frac{(x_i - x_{pt})}{\sigma_{pt}}$$

where:

$x_i$  – the result obtained by the Participant

$x_{pt}$  – assigned value

$\sigma_{pt}$  – standard deviation for proficiency testing evaluation

Criterion:

$|z| \leq 2,0$                       acceptable result

$2,0 < |z| < 3,0$                 warning signal result

$|z| \geq 3,0$                         unacceptable result

**The z' score** (according to ISO 13528:2022-08 point 9.5)

The z' indicator is applicable when the condition is not met  $u(x_{pt}) \leq 0,3\sigma_{pt}$

$$z'_i = \frac{x_i - x_{pt}}{\sqrt{\sigma_{pt}^2 + u^2(x_{pt})}}$$

where:

$x_i$  – the result obtained by the Participant

$x_{pt}$  – assigned value



$\sigma_{pt}$  – standard deviation for proficiency testing

$u(x_{pt})$  – uncertainty of the assigned value

Criterion:

$|z'| \leq 2,0$             acceptable result

$2,0 < |z'| < 3,0$         warning signal result

$|z'| \geq 3,0$             unacceptable result

## 12. Report

The PT organizer, upon receiving all results and conducting statistical analyses, will prepare a report that includes:

- Name and contact details of the Proficiency Testing (PT) Organizer
- Name and contact details of the PT Coordinator
- Name, position, and signature of the person authorizing the report
- Date of issuance and status of the report (e.g., preliminary, intermediate, or final)
- Report number and unambiguous identification of the proficiency testing program
- Indication of activities subcontracted by the PT Organizer
- Number of pages and clear identification of the end of the report
- Detailed description of the objects used in the proficiency testing, including necessary details regarding the preparation of proficiency testing objects and the assessment of homogeneity and stability
- Results of Participants
- Statistical data and summary, including assigned values and the range of acceptable results, along with graphical presentation
- Procedures used to determine each assigned value
- Details regarding measurement consistency and uncertainty for each assigned value
- Procedures used to determine the standard deviation for proficiency assessment or other evaluation criteria
- Assigned values and statistical summaries for the testing methods/procedures used by each participant group (if different participant groups used different methods)
- Procedures used for statistical data analysis
- Comments from the PT Organizer regarding the Participants' results
- Guidance on interpreting the statistical analysis, along with comments and recommendations resulting from the proficiency testing round's outcomes
- Statement regarding the confidentiality of proficiency testing results.

Information regarding the results obtained by specific Participants will be encoded and known only to the PT Organizer. Each Participant will receive information about the assigned code along with the Report.

All results, tabular summaries, Participants' performance analyses presented in the proficiency testing report will be displayed according to the Participant's code.

Reports will be sent to Participants via email in PDF format within the specified schedule.

Participants are required to inform the PT Organizer of any comments on the report affecting the Participant's final assessment or any other errors found in the proficiency testing report within 14 days of receiving it. The PT Organizer is obligated to promptly correct any errors in the report and inform all Participants about it. Comments on the PT report, if expressed dissatisfaction by a Participant, may be treated by the PT Organizer as a complaint and handled in accordance with point 13 of this program.

### **13. Complaints and Appeals**

Participants have the right to submit complaints and/or appeals within 14 days of receiving the report to the email address: [badania.bieglosci@barg.pl](mailto:badania.bieglosci@barg.pl). The PT Organizer will review them within 30 days of receiving the complaint/appeal and provide feedback to the designated contact person. The DBB policy is to fairly address all complaints and appeals received from Participants, customers, or other parties. The procedure for conducting explanations and maintaining records regarding complaints and appeals is described in DSZ – section PT-5.8.

### **14. Contact with the Participant**

DBB provides Participants with all information regarding the implementation of the program, including each individual round. All documents and necessary forms are communicated to participants electronically, through courier services, or collected in person with confirmation of sample receipt.

The coordinator publishes the current schedule of the PT program with planned proficiency testing rounds and participation criteria on the website.

DBB provides participants in the proficiency testing program with:

- PT Program Schedule (4/PT-4.4)
- Registration Form (6/PT-4.4)
- Participant Instructions (5/PT-4.4) – provided before the start of each program round
- Protocol for confirmation of receipt of samples (7/PT-4.4)
- Test Result Cards (8/PT-4.4)
- Proficiency Testing Report – provided to participants after the completion of each program round
- Customer Evaluation Survey about the level of services provided by the PT Organizer (1/PT-5.7)

Participants in proficiency testing can contact the PT Organizer regarding any uncertainties, matters requiring clarification or justification, and any other issues contributing to the improvement of the proficiency testing organization.

## 15. Reference Documents

- PN-EN 12350-1:2019-07 (EN 12350-1:2019) - Testing fresh concrete – Part 1: Sampling and common apparatus
- PN-EN 12350-2:2019-07 (EN 12350-2:2019) - Testing fresh concrete – Part 2: Slump test
- PN-EN 12350-5:2019-08 (EN 12350-5:2019) - Testing fresh concrete – Part 5: Flow table
- PN-EN 12350-6:2019-08 (EN 12350-6:2019) - Testing fresh concrete – Part 6: Density
- PN-EN 12350-7:2019-08 (EN 12350-7:2019), PN-EN 12350-7:2019-08/Ap1:2023-05 - Testing fresh concrete - Part 7: Air content - Pressure methods
- PN-EN 12390-2:2019-07 (EN 12390-2:2019) - Testing hardened concrete – Part 2: Making and curing specimens for strength tests
- PN-EN 12390-3:2019-07 (EN 12390-3:2019) - Testing hardened concrete – Part 3: Compressive strength of test specimens
- PN-EN 12390-5:2019-08 (EN 12390-5:2019) - Testing hardened concrete – Part 5: Flexural strength of test specimens
- PN-EN 12390-6:2024-04 (EN 12390-6:2023) - Testing hardened concrete – Part 6: Tensile splitting strength of test specimens
- PN-EN 12390-7:2019-08 (EN 12390-7:2019), PN-EN 12390-7:2019-08/AC:2021-01 (EN 12390-7:2019/AC:2020) - Testing hardened concrete – Part 7: Density of hardened concrete
- PN-EN 12390-8:2019-08 (EN 12390-8:2019) - Testing hardened concrete – Part 8: Depth of penetration of water under pressure
- PKN-CEN/TS 12390-9:2007 (CEN/TS 12390-9:2006) - Testing hardened concrete - Part 9: Freeze-thaw resistance – Scaling <sup>W</sup>
- PKN-CEN/TS 12390-9:2017-07 (CEN/TS 12390-9:2016) - Testing hardened concrete - Part 9: Freeze-thaw resistance with de-icing salts – Scaling
- PN-B-06265:2022-08 Annex N Concrete - Requirements, performance, production and conformity - National Supplement PN-EN 206+A2:2021-08
- PN-88/B-06250 Ordinary concrete <sup>W</sup>
- PN-EN ISO/IEC 17025:2018-02 (EN ISO/IEC 17025:2017) General requirements for the competence of testing and calibration laboratories
- PN-EN ISO/IEC 17043:2011 (EN ISO/IEC 17043:2010) Conformity assessment – General requirements for proficiency testing <sup>W</sup>
- PN-ISO 2854:1994 (ISO 2854:1976) Statistical interpretation of data — Techniques of estimation and tests relating to means and variances
- PN-ISO 5725-1:2002 (ISO 5725-1:1994) Accuracy (trueness and precision) of measurement methods and results — Part 1: General principles and definitions

<sup>W</sup> standard with withdrawn status

- PN-ISO 5725-2:2002 (ISO 5725-2:1994) Accuracy (trueness and precision) of measurement methods and results — Part 2: Basic method for the determination of repeatability and reproducibility of a standard measurement method
- ISO 13528:2022-08 Statistical methods for use in proficiency testing by interlaboratory comparisons
- DA-05 Proficiency Testing Participation Policy (ILAC-P9)
- DA-06 Measurement Consistency Policy (ILAC-P10)
- ILAC-G17 ILAC Guidelines for Measurements Uncertainty in Testing